

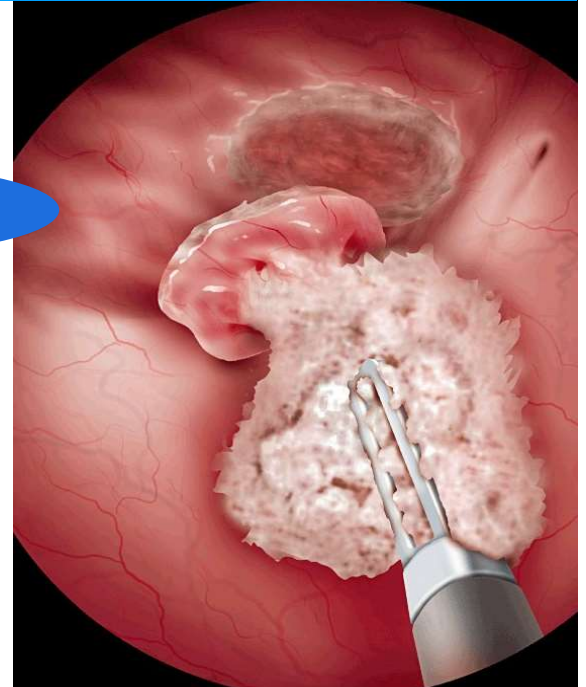
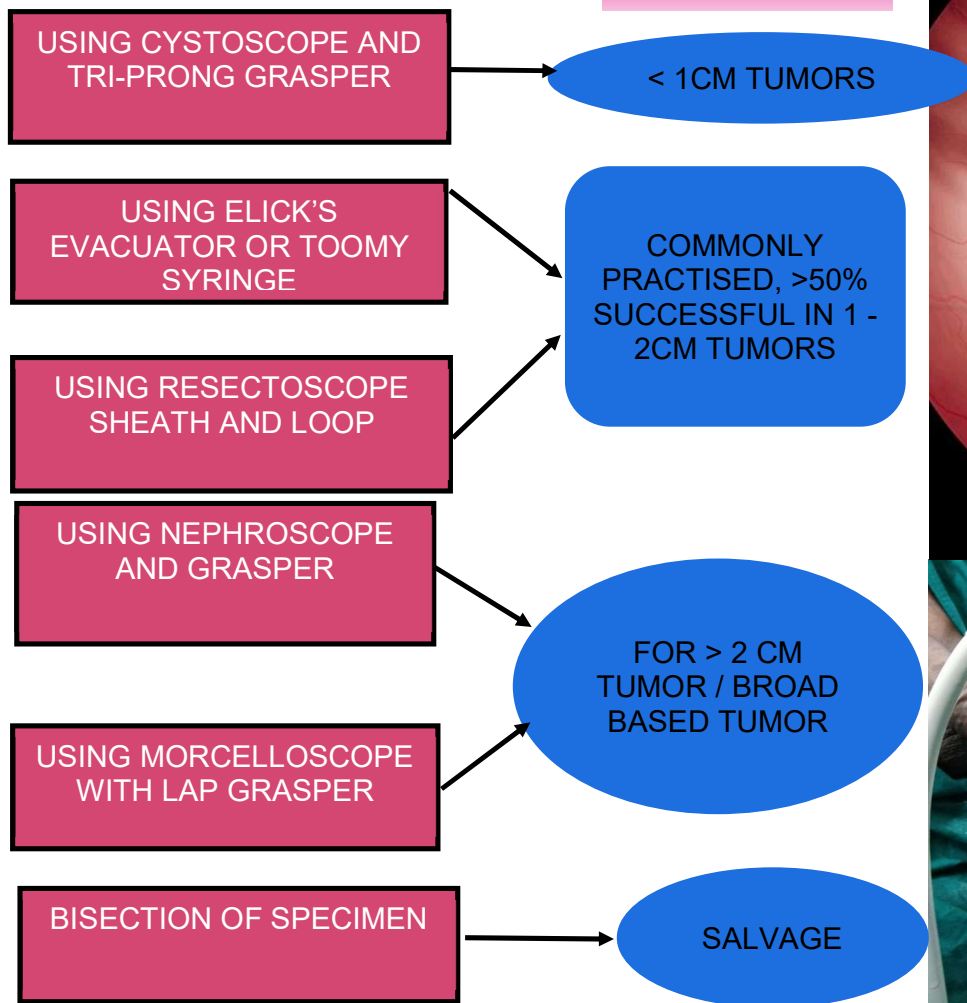
TECHNIQUES OF SPECIMEN RETRIEVAL AFTER EN-BLOCK RESECTION OF BLADDER TUMOR

~Sumantra Dey, Pramod Kumar Sharma, Department of Urology, CNMCH, Kolkata

INTRODUCTION AND OBJECTIVES

- ERBT is safe, feasible, effective procedure. Inherent problem of retrieval of large resected tumor
- **Objective** - Enumerate techniques of retrieval of tumor practiced in our center

METHODS



RESULT

- Routine evacuators are used initially, usually unsuccessful for large specimens. Techniques using resectoscope and cystoscope are predominant techniques used, useful for majority of cases.
- Tumors > 2cm usually require instruments with larger working channel for introducing larger graspers. Tumors > 3cm can occasionally be retrieved by above technique, but usually require salvage technique.
- Retrieval of specimen requires mean time of 9 mins, and up to 22 mins for larger masses.
- No significant complications were noted with the above-described procedures.

CONCLUSION

Retrieval of specimen after ERBT is time consuming and frustrating if not approached systematically. With increasing experience and improvement of technique, tumors up to 4cm can be safely and swiftly removed.